

The most innovative PDU on the market



**Intelligent, Rack Mounted,
Power Distribution Unit**

KWX-N2 PDU

KWX-N32A24P20X4-V2CB

**Total Power Monitoring &
Outlet Metering**



www.pduexpertuk.com



- ✓ Monitor Each Sockets Current Usage
- ✓ Monitor the Total Current
- ✓ Monitors the Input & Output Voltage
- ✓ Monitor the Total kWh
- ✓ Hot Swappable Network Card
- ✓ Power Factor Recognition
- ✓ 20 x C13 & 4 x C19 Sockets
- ✓ 32A or 16A IEC 309 Plug
- ✓ 55 °C Hot Rack Operating
- ✓ SMS, SNMP & Email Notification
- ✓ C13 IEC Locking as Standard
- ✓ Built In Environmental Monitoring Technology as Standard
- ✓ Infrared Monitoring
- ✓ Temperature & Humidity Alarm
- ✓ Water Logging Alarm
- ✓ Rack Door Open Alarm
- ✓ Smoke Alarm
- ✓ Up to 8 Plug 'n' Play Sensors
- ✓ Blade Server Ready
- ✓ Dry Connector for Audible Alarms
- ✓ Intelligent Outlet Type & Number Recognition
- ✓ 24v & 48v, Single Phase 120v & 240V, 3 Phase 400v

KWX-N2

OMP Outlets and Metered PDU

KWX-N2 series is the new generation of Intelligent PDU. It combines network power distribution and environmental monitoring technology; it provides real-time remote power consumption of total current load and voltage. KWX provides per outlet power monitoring. **Power information of individual outlet includes current, voltage, apparent power and power factor.**

Receive SNMP-based or email alerts when power or environmental surroundings go above the thresholds. Assign access rights to user groups or individuals. KWX OMP products provide the necessary flexibility, with embedded multithreading inner core RTOS (Real Time Operating Systems), the software supports multitask and multiuser access. RTOS software supports also various TCP/IP protocols, including HTTP, HTTPS, SSL, SNMP, TELNET, SSH, SMTP etc.

Built in environmental technology monitoring : Temperature & humidity, water logging, smoke alarm, infrared alarm for intrusion detection and door alarm.

Socket Types



Dimension

Vertical (W x D x H) = 1879mm x 58mm x 44.45mm

Items		Description	N1	N2	N3	N4
Monitor Functions	LED Display	Current Load of total pdu and per ports	✓	✓	✓	✓
		LED flashes when overload	✓	✓	✓	✓
		PDU Address, Version Number	✓	✓	✓	✓
	Managing software/Hyper Terminal	Total Current Load	✓	✓	✓	✓
		Monitors Current Load Per Ports	✗	✓	✗	✓
		Input Voltage	✓	✓	✓	✓
		Max. Voltage configured	✓	✓	✓	✓
		Max. Current configured	✓	✓	✓	✓
		Sensors state (optional)	✓	✓	✓	✓
Control Functions	PC Control	On/off of individual unit	✗	✗	✓	✓
		Power On /Off time setting	✗	✗	✓	✓
		Stay the same after restart	✗	✗	✓	✓
Accessing Method		RS 485 port	✓	✓	✓	✓
Daisy-chain ways		Serial and radiation connection	✓	✓	✓	✓

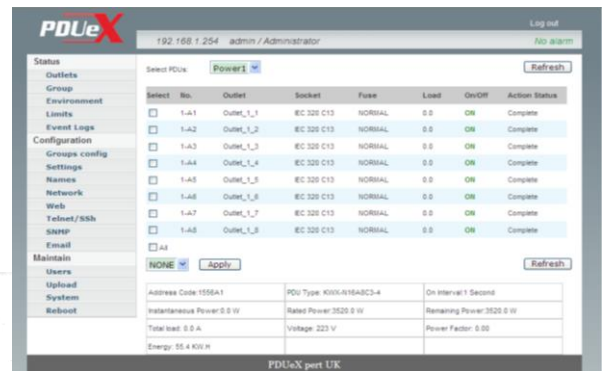
KWX-N2

KWX-N2 Series is the new generation of PDU. It combines network power distribution, environmental monitoring technology and provides real-time power consumption of total current load and voltage. Unit Metered, KWX series can be access via LAN/WAN or over serial interface. KWX-N series is a remote monitor PDU with embedded multithreading inner core RTOS (Real Time Operating Systems), that supports multitask & multiuser access. The software supports various TCP/IP Protocols, including HTTP, HTTPS, SSL, SNMP, TELNET, SSH, SMTP etc.

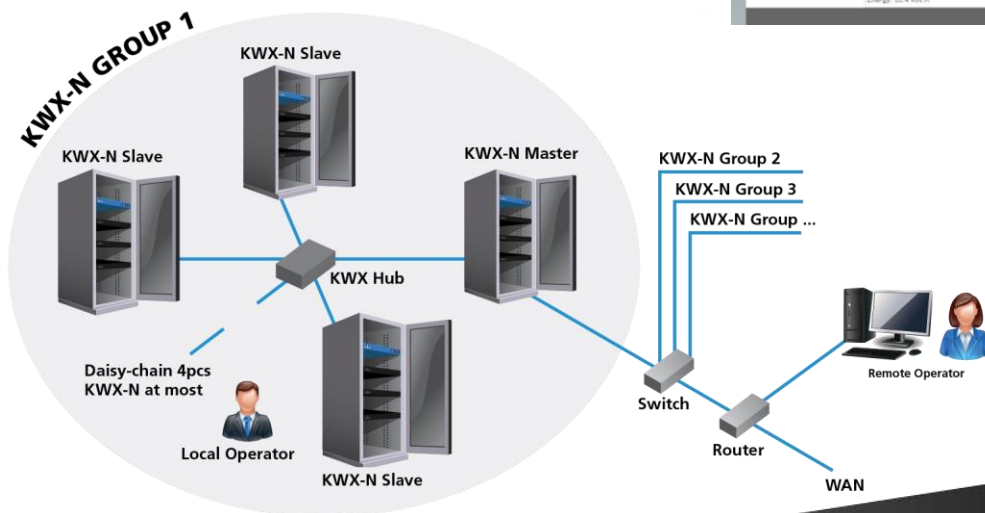
Optional: Temperature and humidity, smoke alarm
Water logging alarm, infrared alarm, and door alarm.

Monitor: Monitor the total current, monitor the total kWh, monitor the input voltage, monitor environment Temperature, monitor environment humidity, monitor environment smoke. Monitor water logging, infrared monitoring, and door open monitoring.

Alarm settings: Total current over the limit, on the temperature limit, on the humidity limit, smoke alarm and water logging alarm, infrared enters alarm, door open alarm, dry connection



Radiation Connection



KWX PDU SENSORS



Infrared Sensor



Door Sensor



**Temperature/
Humidity Sensor**



**Water Logging
Sensor**



Smoke Sensor