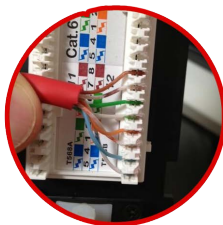


"Quality manufactured patch panels
to British & EU standards"

KWB-PATCH24P



KWB-PATCH24P - 1U 24 Port 19" CAT6 UTP Patch Panel

Dimensions = 440mm x 44.5mm x 83mm (W x H x D)

Mounting Length = 483mm (19")



2U 48 port version

Specifications:

- ✓ Voltage rating 125v AC
- ✓ Current rating 1.5 amp
- ✓ Contact resistance 100 milli-ohms (max)
- ✓ Operating Temperature 0°C - 70°C
- ✓ Black powder coated mild steel
- ✓ Contacts are phosphor bronze with nickel plating

*Customer note: Due to continual improvements in design or otherwise,
this product may differ slightly from the illustration(s).*

